

# Hana Chair Upholstered

SIMONE BONANNI



The Hana Chair by Simone Bonanni combines timeless comfort and unparalleled distinction. Inspired by the unfurling of a flower, its unique design captivates with organic shapes, curved lines, and a petal-like backrest. Versatile and customisable, the Hana Chair effortlessly blends into your home. The chair is available in six different colours and can be upholstered to fit your style. Personalise further by choosing the stackable or non-stackable metal base in chrome or matte black. The Hana Chair is designed to last. The encompassing backrest provides you with support and flexibility, prioritising comfort without compromising on aesthetics.

---

## *Detailing*



The Hana Chair can be upholstered in a wide range of fabrics and offers a regular and stackable base in two colours for added versatility.

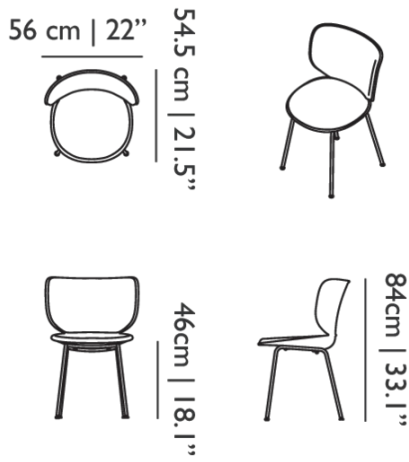
---

## *Colours*

CAT II

# Hana Chair Upholstered / Non-Stackable Black Legs

## Dimensions



## Product

**WIDTH** 56cm | 22"  
**HEIGHT** 84cm | 33.1"  
**DEPTH** 54.5cm | 21.5"  
**WEIGHT NETTO** 5.9kg | 13.01lbs

## Packaging

**WIDTH** 57cm | 22.4"  
**HEIGHT** 85cm | 33.5"  
**CUBAGE** 0.29m<sup>3</sup> | 10.27ft<sup>3</sup>  
**LENGTH** 60cm | 23.6"  
**WEIGHT** 6.1kg | 13.45lbs

## Technical

### MATERIAL

PPGF and Steel

### SEAT DEPTH

45cm | 17.7"

### SEAT HEIGHT

46cm | 18.1"

### SEAT WIDTH

50cm | 19.7"

## Upholstery

*DIVINA 3 (available in 56 colours)*



### COMPOSITION

100% WO

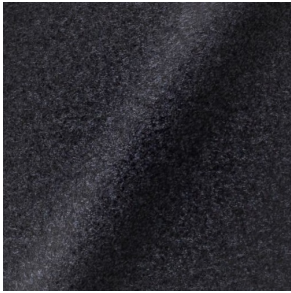
### ABRASION

45000 martindale  
lightfastness 7  
pilling 3

### FIRE RESISTANCE

BS 5852 - Ignition source  
0 (Cigarette)  
BS 5852 - Ignition source  
5 (Crib 5)  
BS 5852 - Ignition source  
1 (Match flame equivalent)  
EN 1021-1 (Cigarette)  
EN 1021-2 (Match)  
TB 117-2013  
EU Ecolabel

*DIVINA MD (available in 27 colours)*



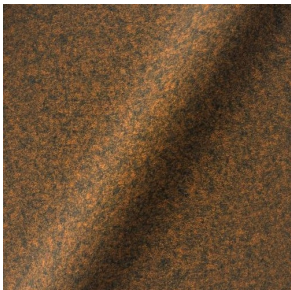
**COMPOSITION**  
100% WO

**ABRASION**  
45000 martindale  
lightfastness 6  
pilling 3

**FIRE RESISTANCE**  
BS 5852 - Ignition source  
0 (Cigarette)  
BS 5852 - Ignition source  
5 (Crib 5)  
BS 5852 - Ignition source  
1 (Match flame equivalent)  
EN 1021-1 (Cigarette)  
EN 1021-2 (Match)  
EU Ecolabel

---

*DIVINA MELANGE 3 (available in 49 colours)*



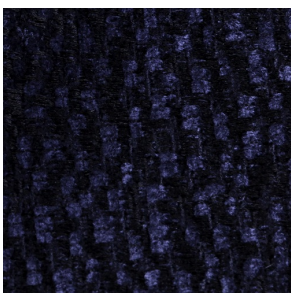
**COMPOSITION**  
100% WO

**ABRASION**  
45000 martindale  
lightfastness 6 - 7  
pilling 3

**FIRE RESISTANCE**  
BS 5852 - Ignition source  
0 (Cigarette)  
BS 5852 - Ignition source  
5 (Crib 5)  
BS 5852 - Ignition source  
1 (Match flame equivalent)  
EN 1021-1 (Cigarette)  
EN 1021-2 (Match)  
TB 117-2013  
EU Ecolabel

---

*Calligraphy Bird (available in 4 colours)*



**COMPOSITION**  
64% CV, 21% PES, 15%  
CO

**ABRASION**  
50000 martindale  
lightfastness 4 - 6  
pilling 5

*Dodo Pavone (available in 3 colours)*



**COMPOSITION**  
12% CO, 88% PES

**ABRASION**  
40000 martindale  
lightfastness 5  
pilling 4 - 5

---

*Memento Moooi Medley (available in 1 colours)*



**COMPOSITION**  
100% PES

**ABRASION**  
50000 martindale  
lightfastness 4 - 6  
pilling 5

**FIRE RESISTANCE**  
EN 1021-1 (Cigarette)  
EN 1021-2 (Match)  
TB 117-2013

---

*Menagerie of Extinct Animals (available in 2 colours)*



**COMPOSITION**  
100% PES

**ABRASION**  
50000 martindale  
lightfastness 4 - 6  
pilling 5

**FIRE RESISTANCE**  
EN 1021-1 (Cigarette)  
EN 1021-2 (Match)  
TB 117-2013

---

*Rendezvous Tokyo Blue (available in 1 colours)*



**COMPOSITION**  
100% PES

**ABRASION**  
50000 martindale  
lightfastness 4 - 6  
pilling 5

*Blushing Sloth Melange Mohair (available in 1 colours)*



**COMPOSITION**

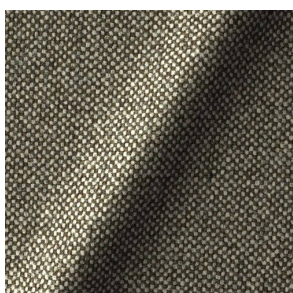
85% WV, 15% WM

**ABRASION**

15000 martindale  
lightfastness 4 - 6  
pilling 2 - 3

---

*HALLINGDAL 65 (available in 58 colours)*



**COMPOSITION**

30% CV, 70% WV

**ABRASION**

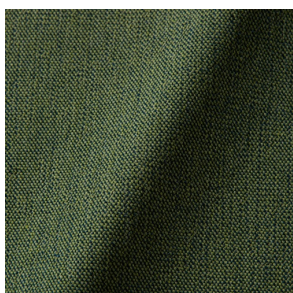
100000 martindale  
lightfastness 7  
pilling 3 - 4

**FIRE RESISTANCE**

BS 5852 - Ignition source  
0 (Cigarette)  
BS 5852 - Ignition source  
5 (Crib 5)  
BS 5852 - Ignition source  
1 (Match flame equivalent)  
EN 1021-1 (Cigarette)  
EN 1021-2 (Match)  
TB 117-2013  
EU Ecolabel

---

*JUSTO (available in 10 colours)*



**COMPOSITION**

15% CO, 35% PC, 10% PA,  
40% CV

**ABRASION**

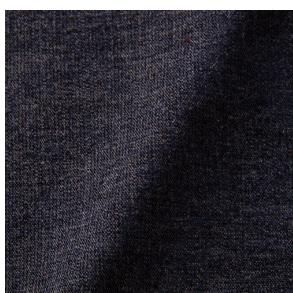
50000 martindale  
lightfastness 5  
pilling 4

**FIRE RESISTANCE**

EN 1021-1 (Cigarette)  
EN 1021-2 (Match)  
TB 117-2013

---

*LISCIO (available in 11 colours)*



**COMPOSITION**

35% WO, 35% CV, 21%  
CO, 9% PA

**ABRASION**

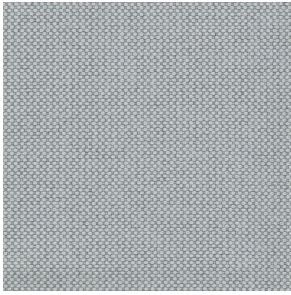
30000 martindale  
lightfastness 4 - 6  
pilling 4

**FIRE RESISTANCE**

TB 117-2013

---

*MERIT (available in 43 colours)*



**COMPOSITION**

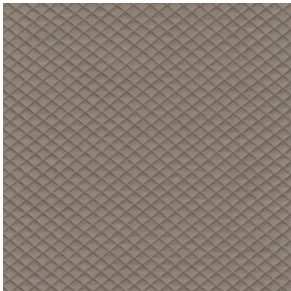
24% PES, 76%

**ABRASION**

85000 martindale  
lightfastness 7  
pilling 4

---

*MOSAIC 2 (available in 15 colours)*



**COMPOSITION**

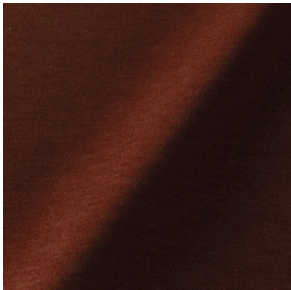
58% PES, 27% WV, 9% PA,  
6% EA

**ABRASION**

100000 martindale  
lightfastness 6 - 7  
pilling 4 - 5

---

*PALETTE (available in 24 colours)*



**COMPOSITION**

42% CO, 29% WO, 29%  
TL

**ABRASION**

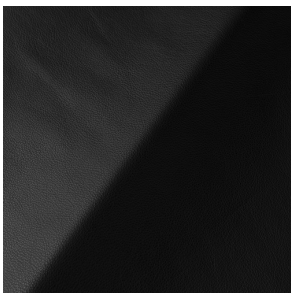
45000 martindale  
lightfastness 4 - 5  
pilling 3 - 3

**FIRE RESISTANCE**

BS 5852 - Ignition source  
0 (Cigarette)  
TB 117-2013  
BS 5852 - Ignition source  
5 (Crib 5)

---

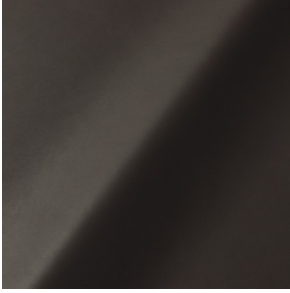
*SAVANNE (available in 3 colours)*



**FIRE RESISTANCE**

EN 1021-1 (Cigarette)  
EN 1021-2 (Match)  
TB 117-2013  
OEKO-TEX

*SHADE (available in 6 colours)*



**ABRASION**

lightfastness 3 - 4

**FIRE RESISTANCE**

EN 1021-1 (Cigarette)  
EN 1021-2 (Match)  
TB 117-2013

*SOLIS (available in 9 colours)*



**COMPOSITION**

60% WO, 30% PES, 2%  
PA, 3% PC

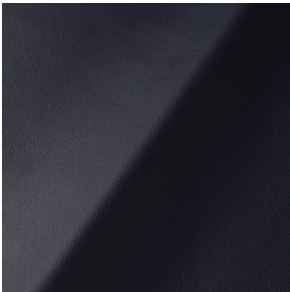
**ABRASION**

40000 martindale  
lightfastness 5  
pilling 3 - 4

**FIRE RESISTANCE**

EN 1021-1 (Cigarette)  
EN 1021-2 (Match)  
TB 117-2013

*SPECTRUM (available in 11 colours)*



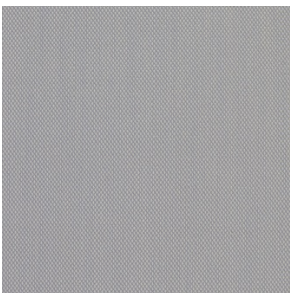
**ABRASION**

lightfastness 6 - 6

**FIRE RESISTANCE**

EN 1021-1 (Cigarette)  
EN 1021-2 (Match)  
TB 117-2013  
OEKO-TEX

*STEELCUT TRIO 3 (available in 54 colours)*



**COMPOSITION**

90% WV, 10% PA

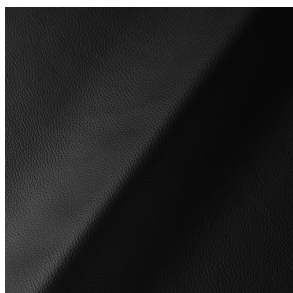
**ABRASION**

100000 martindale  
lightfastness 5  
pilling 4

**FIRE RESISTANCE**

BS 5852 - Ignition source  
0 (Cigarette)  
BS 5852 - Ignition source  
1 (Match flame equivalent)  
EN 1021-1 (Cigarette)  
EN 1021-2 (Match)  
EU Ecolabel

*ULTRA (available in 6 colours)*



**ABRASION**

lightfastness 6 - 7

**FIRE RESISTANCE**

EN 1021-1 (Cigarette)  
EN 1021-2 (Match)  
TB 117-2013  
ANSI/BIFMA M7.1 (Total  
Volatile Organic  
Compounds)

---

*VESPER (available in 8 colours)*



**COMPOSITION**

10% CO, 40% LI, 10% PA,  
10% PES, 30% CV

**ABRASION**

40000 martindale  
lightfastness 5  
pilling 4

**FIRE RESISTANCE**

EN 1021-1 (Cigarette)  
EN 1021-2 (Match)  
TB 117-2013

---