

m o o o i

Zio Dining Chair

MARCEL WANDERS



Dining at home acquires a whole new meaning with the classic elegance and contemporary comfort of the Zio dining chair by Marcel Wanders. Sitting in its solid, sculptured wooden structure and soft cushioned body makes you feel immediately at ease, ready for an exquisite meal and a sharp conversation!

Detailing



The Zio Dining Chair unites the strong, yet light look of stained oak with the beauty of organic shapes, finished off with straight modern cuts.

Zio Dining Chair

Dimensions

57cm | 22.4"



57cm | 22.4"



52cm | 20.5"



84cm | 33.1"

Product

WIDTH 57cm | 22.4"

HEIGHT 84cm | 33.1"

DEPTH 57cm | 22.4"

WEIGHT NETTO 10.001kg | 22.05lbs

Packaging

WIDTH 63cm | 24.8"

HEIGHT 85cm | 33.5"

CUBAGE 0.35m³ | 12.36ft³

LENGTH 65cm | 25.6"

WEIGHT 12kg | 26.46lbs

Technical

ADDITIONAL

Frame available in different stain colours.

MATERIAL

Solid oak Frame, CMHR Foam.

HEIGHT ARMREST

66cm | 26"

SEAT HEIGHT

52cm | 20.5"

SEAT DEPTH

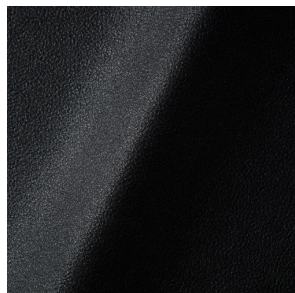
44cm | 17.3"

SEAT WIDTH

48cm | 18.9"

Upholstery

ABBRACCI (available in 5 colours)



COMPOSITION

100% PES

ABRASION

30000 martindale
lightfastness 3 - 4
pilling 5

FIRE RESISTANCE

BS 5852 - Ignition source
0 (Cigarette)
BS 5852 - Ignition source
1 (Match flame equivalent)
EN 1021-1 (Cigarette)
EN 1021-2 (Match)
TB 117-2013

CANVAS 2 (available in 45 colours)



COMPOSITION

90% WO, 10% PA

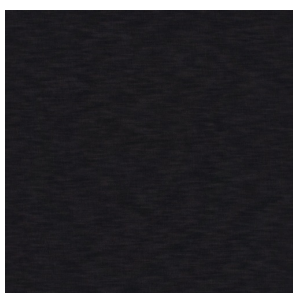
ABRASION

100000 martindale
lightfastness 6
pilling 4

FIRE RESISTANCE

BS 5852 - Ignition source
1 (Match flame equivalent)
BS 5852 - Ignition source
0 (Cigarette)
TB 117-2013
EU Ecolabel

DENIM (available in 3 colours)



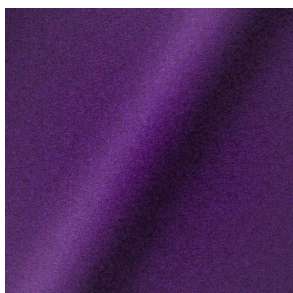
COMPOSITION

100% CO

ABRASION

70000 martindale
lightfastness 4
pilling 3 - 4

DIVINA 3 (available in 56 colours)



COMPOSITION

100% WO

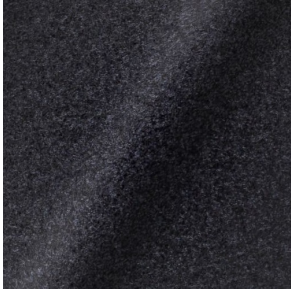
ABRASION

45000 martindale
lightfastness 7
pilling 3

FIRE RESISTANCE

BS 5852 - Ignition source
0 (Cigarette)
BS 5852 - Ignition source
5 (Crib 5)
BS 5852 - Ignition source
1 (Match flame equivalent)
EN 1021-1 (Cigarette)
EN 1021-2 (Match)
TB 117-2013
EU Ecolabel

DIVINA MD (available in 27 colours)



COMPOSITION
100% WO

ABRASION
45000 martindale
lightfastness 6
pilling 3

FIRE RESISTANCE
BS 5852 - Ignition source
0 (Cigarette)
BS 5852 - Ignition source
5 (Crib 5)
BS 5852 - Ignition source
1 (Match flame equivalent)
EN 1021-1 (Cigarette)
EN 1021-2 (Match)
EU Ecolabel

DIVINA MELANGE 3 (available in 49 colours)

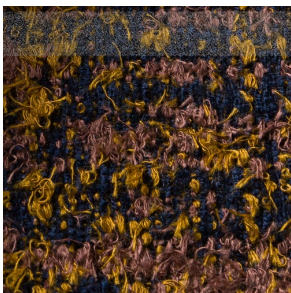


COMPOSITION
100% WO

ABRASION
45000 martindale
lightfastness 6 - 7
pilling 3

FIRE RESISTANCE
BS 5852 - Ignition source
0 (Cigarette)
BS 5852 - Ignition source
5 (Crib 5)
BS 5852 - Ignition source
1 (Match flame equivalent)
EN 1021-1 (Cigarette)
EN 1021-2 (Match)
TB 117-2013
EU Ecolabel

Bearded Leopard (available in 3 colours)



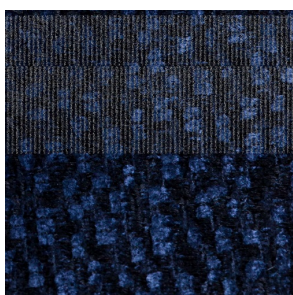
COMPOSITION
77% CV, 15% PES, 7% CO,
1% PA

ABRASION
15000 martindale
lightfastness 4 - 6
pilling 4

Bison (available in 1 colours)



Calligraphy Bird (available in 4 colours)



COMPOSITION

64% CV, 21% PES, 15%
CO

ABRASION

50000 martindale
lightfastness 4 - 6
pilling 5

Dodo Pavone (available in 3 colours)



COMPOSITION

12% CO, 88% PES

ABRASION

40000 martindale
lightfastness 5
pilling 4 - 5

Memento Moooi Medley (available in 1 colours)



COMPOSITION

100% PES

ABRASION

50000 martindale
lightfastness 4 - 6
pilling 5

FIRE RESISTANCE

EN 1021-1 (Cigarette)
EN 1021-2 (Match)
TB 117-2013

Menagerie of Extinct Animals (available in 2 colours)



COMPOSITION

100% PES

ABRASION

50000 martindale
lightfastness 4 - 6
pilling 5

FIRE RESISTANCE

EN 1021-1 (Cigarette)
EN 1021-2 (Match)
TB 117-2013

Rendezvous Tokyo Blue (available in 1 colours)



COMPOSITION

100% PES

ABRASION

50000 martindale
lightfastness 4 - 6
pilling 5

Blushing Sloth Melange Mohair (available in 1 colours)



COMPOSITION

85% WV, 15% WM

ABRASION

15000 martindale
lightfastness 4 - 6
pilling 2 - 3

Blushing Sloth Woolly Mohair (available in 1 colours)



COMPOSITION

24% PES, 15% PA, 8% CO,
24% WM, 29% WV

ABRASION

40000 martindale
lightfastness 4 - 6
pilling 3 - 4

FIORD (available in 39 colours)



COMPOSITION

92% WV, 8% PA

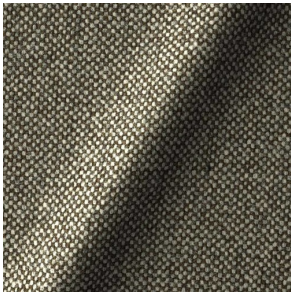
ABRASION

60000 martindale
lightfastness 6
pilling 4 - 5

FIRE RESISTANCE

EN 1021-1 (Cigarette)
EN 1021-2 (Match)
BS 5852 - Ignition source
0 (Cigarette)
BS 5852 - Ignition source
1 (Match flame equivalent)

HALLINGDAL 65 (available in 58 colours)



COMPOSITION

30% CV, 70% WV

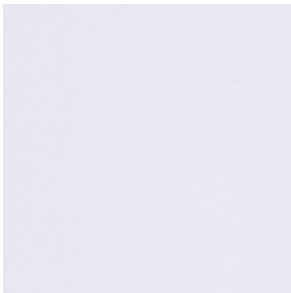
ABRASION

100000 martindale
lightfastness 7
pilling 3 - 4

FIRE RESISTANCE

BS 5852 - Ignition source
0 (Cigarette)
BS 5852 - Ignition source
5 (Crib 5)
BS 5852 - Ignition source
1 (Match flame equivalent)
EN 1021-1 (Cigarette)
EN 1021-2 (Match)
TB 117-2013
EU Ecolabel

HARALD 3 (available in 30 colours)



COMPOSITION

100% CO

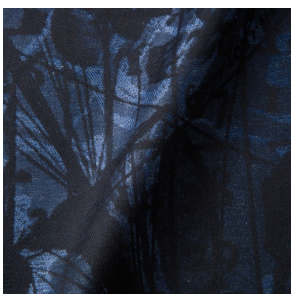
ABRASION

100000 martindale
lightfastness 5
pilling 4 - 5

FIRE RESISTANCE

EN 1021-1 (Cigarette)

JACQUARD, ANDAZ (available in 1 colours)



COMPOSITION

34% CO, 30% CV, 24%
LI, 12% PA

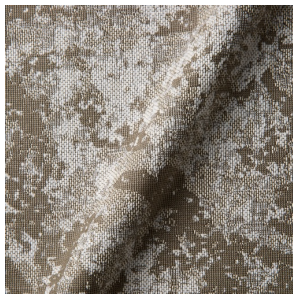
ABRASION

25000 martindale
lightfastness 4 - 6
pilling 4 - 5

FIRE RESISTANCE

BS 5852 - Ignition source
0 (Cigarette)
BS 5852 - Ignition source
1 (Match flame equivalent)
EN 1021-1 (Cigarette)
EN 1021-2 (Match)

JACQUARD, FRESC (available in 1 colours)



COMPOSITION

52% CV, 38% CO, 10% LI

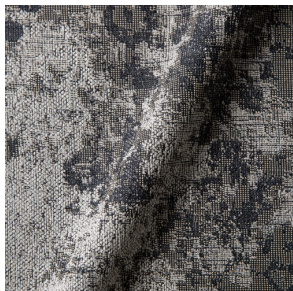
ABRASION

15000 martindale
lightfastness 3 - 4
pilling 2 - 3

FIRE RESISTANCE

BS 5852 - Ignition source
0 (Cigarette)
EN 1021-1 (Cigarette)
EN 1021-2 (Match)

JACQUARD, OLD (available in 2 colours)



COMPOSITION

52% CV, 38% CO, 10% LI

ABRASION

15000 martindale
lightfastness 3 - 4
pilling 2 - 3

FIRE RESISTANCE

BS 5852 - Ignition source
0 (Cigarette)
EN 1021-1 (Cigarette)
EN 1021-2 (Match)

JUSTO (available in 10 colours)



COMPOSITION

15% CO, 35% PC, 10% PA,
40% CV

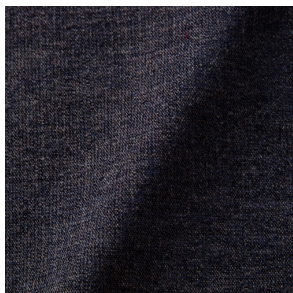
ABRASION

50000 martindale
lightfastness 5
pilling 4

FIRE RESISTANCE

EN 1021-1 (Cigarette)
EN 1021-2 (Match)
TB 117-2013

LISCIO (available in 11 colours)



COMPOSITION

35% WO, 35% CV, 21%
CO, 9% PA

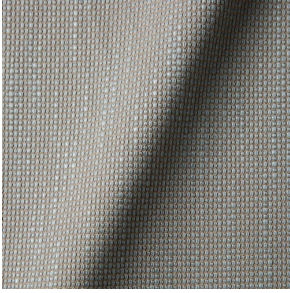
ABRASION

30000 martindale
lightfastness 4 - 6
pilling 4

FIRE RESISTANCE

TB 117-2013

MACCHEDIL GREZZO (available in 10 colours)



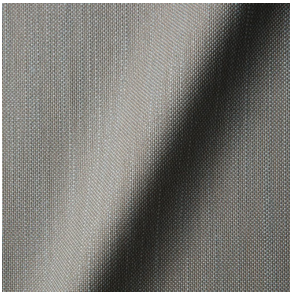
COMPOSITION

47% CO, 20% CV, 18%
PA, 8% LI, 5% PC

ABRASION

15000 martindale
lightfastness 3 - 5
pilling 4 - 5

MACCHEDIL SOTTILE (available in 10 colours)



COMPOSITION

49% CV, 24% PES, 21% LI,
6% CO

ABRASION

20000 martindale
lightfastness 3 - 5
pilling 2 - 3

MANGA (available in 4 colours)



COMPOSITION

29% PES, 71% CO

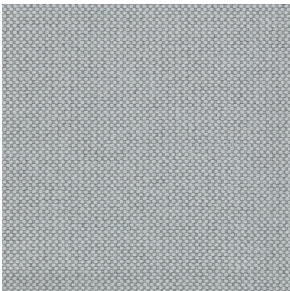
ABRASION

40000 martindale
lightfastness 4 - 5

FIRE RESISTANCE

BS 5852 - Ignition source
0 (Cigarette)
BS 5852 - Ignition source
1 (Match flame equivalent)

MERIT (available in 43 colours)



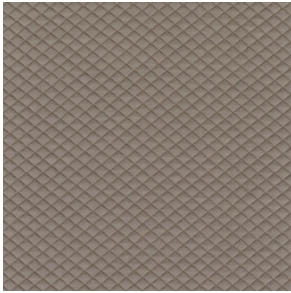
COMPOSITION

24% PES, 76%

ABRASION

85000 martindale
lightfastness 7
pilling 4

MOSAIC 2 (available in 15 colours)



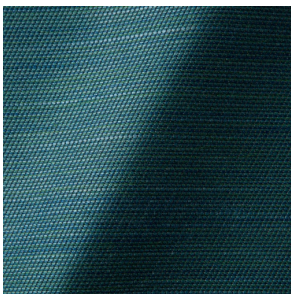
COMPOSITION

58% PES, 27% WV, 9% PA,
6% EA

ABRASION

100000 martindale
lightfastness 6 - 7
pilling 4 - 5

ORAY RAY (available in 15 colours)



COMPOSITION

39% LI, 38% CV, 15% PE,
8% CO

ABRASION

30000 martindale
pilling 4 - 5

FIRE RESISTANCE

BS 5852 - Ignition source
0 (Cigarette)
BS 5852 - Ignition source
1 (Match flame equivalent)
TB 117-2013

ORAY RONAN (available in 5 colours)



COMPOSITION

39% LI, 38% CV, 15% PE,
8% CO

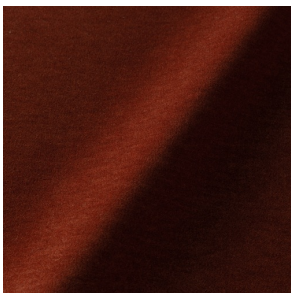
ABRASION

30000 martindale
pilling 4 - 5

FIRE RESISTANCE

BS 5852 - Ignition source
0 (Cigarette)
BS 5852 - Ignition source
1 (Match flame equivalent)
TB 117-2013

PALETTE (available in 24 colours)



COMPOSITION

42% CO, 29% WO, 29%
TL

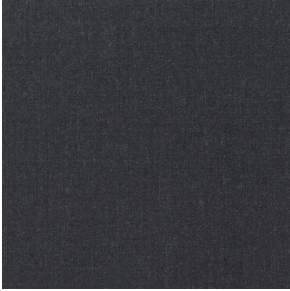
ABRASION

45000 martindale
lightfastness 4 - 5
pilling 3 - 3

FIRE RESISTANCE

BS 5852 - Ignition source
0 (Cigarette)
TB 117-2013
BS 5852 - Ignition source
5 (Crib 5)

REMIX 3 (available in 53 colours)



COMPOSITION

10% PA, 90% WV

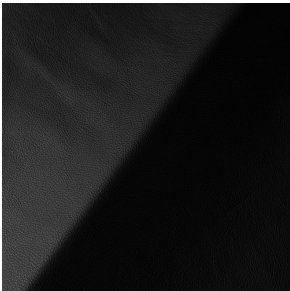
ABRASION

100000 martindale

lightfastness 5

pilling 4

SAVANNE (available in 3 colours)



FIRE RESISTANCE

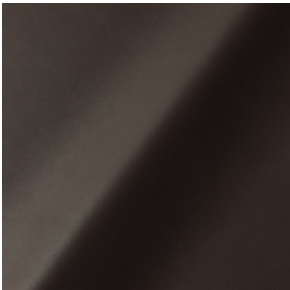
EN 1021-1 (Cigarette)

EN 1021-2 (Match)

TB 117-2013

OEKO-TEX

SHADE (available in 6 colours)



ABRASION

lightfastness 3 - 4

FIRE RESISTANCE

EN 1021-1 (Cigarette)

EN 1021-2 (Match)

TB 117-2013

SOLIS (available in 9 colours)



COMPOSITION

60% WO, 30% PES, 2%
PA, 3% PC

ABRASION

40000 martindale

lightfastness 5

pilling 3 - 4

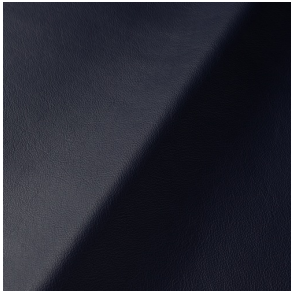
FIRE RESISTANCE

EN 1021-1 (Cigarette)

EN 1021-2 (Match)

TB 117-2013

SPECTRUM (available in 11 colours)



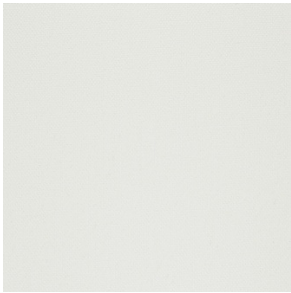
ABRASION

lightfastness 6 - 6

FIRE RESISTANCE

EN 1021-1 (Cigarette)
EN 1021-2 (Match)
TB 117-2013
OEKO-TEX

STEELCUT 2 (available in 37 colours)



COMPOSITION

90% WV, 10% PA

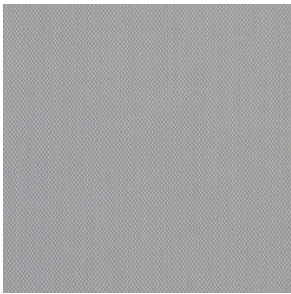
ABRASION

100000 martindale
lightfastness 6
pilling 3 - 4

FIRE RESISTANCE

BS 5852 - Ignition source
0 (Cigarette)
BS 5852 - Ignition source
1 (Match flame equivalent)
EN 1021-1 (Cigarette)
EN 1021-2 (Match)
TB 117-2013
EU Ecolabel

STEELCUT TRIO 3 (available in 54 colours)



COMPOSITION

90% WV, 10% PA

ABRASION

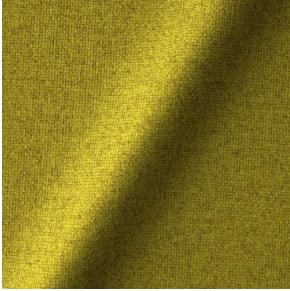
100000 martindale
lightfastness 5
pilling 4

FIRE RESISTANCE

BS 5852 - Ignition source
0 (Cigarette)
BS 5852 - Ignition source
1 (Match flame equivalent)
EN 1021-1 (Cigarette)
EN 1021-2 (Match)
EU Ecolabel

TARTANIC (available in 0 colours)

TONICA 2 (available in 39 colours)

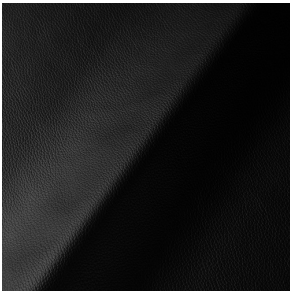


COMPOSITION
100% WV

ABRASION
45000 martindale
lightfastness 6 - 7
pilling 4 - 5

FIRE RESISTANCE
EN 1021-1 (Cigarette)
EN 1021-2 (Match)

ULTRA (available in 6 colours)



ABRASION
lightfastness 6 - 7

FIRE RESISTANCE
EN 1021-1 (Cigarette)
EN 1021-2 (Match)
TB 117-2013
ANSI/BIFMA M7.1 (Total
Volatile Organic
Compounds)

VESPER (available in 8 colours)



COMPOSITION
10% CO, 40% LI, 10% PA,
10% PES, 30% CV

ABRASION
40000 martindale
lightfastness 5
pilling 4

FIRE RESISTANCE
EN 1021-1 (Cigarette)
EN 1021-2 (Match)
TB 117-2013
