

# Cloud Sofa

MARCEL WANDERS



Have you ever wished that you could fall into the softness of a white cloud that looks like cotton candy? After a brief reality check this daydream is forgotten, until you catch a glimpse of the Cloud sofa by Marcel Wanders, a composition of rounded shapes & soft white cushions. The sofa is available in a wide range of colours and carries the comforting sensation of falling into a fluffy cloud on a bright sunny day.

---

## *Detailing*



The finish of the upholstery buttons depend on your choice of fabric and colour.

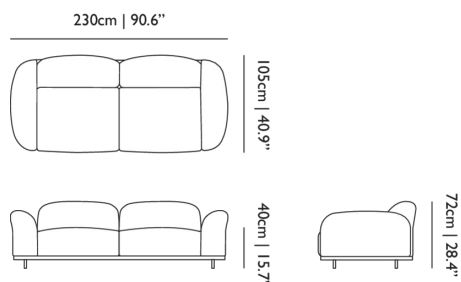
---

## *Colours*

CAT 1

# Cloud Sofa / Sofa

## Dimensions



## Product

**WIDTH** 230cm | 90.6"

**HEIGHT** 72cm | 28.3"

**DEPTH** 105cm | 41.3"

## Packaging

**WIDTH** 103.5cm | 40.7"

**HEIGHT** 80cm | 31.5"

**CUBAGE** 2.07m<sup>3</sup> | 73.1ft<sup>3</sup>

**LENGTH** 250cm | 98.4"

**WEIGHT** 113kg | 249.12lbs

## Technical

### ADDITIONAL

Pillows available seperately

### MATERIAL

Steel frame, moulded foam and dacron.

### HEIGHT ARMREST

68cm | 26.8"

### SEAT HEIGHT

41cm | 16.1"

### SEAT WIDTH

176cm | 69.3"

### SEAT DEPTH

69cm | 27.2"

### SEAT HEIGHT 2

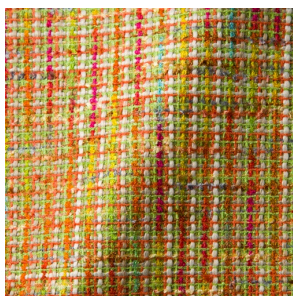
37cm | 14.6"

### SEATING CAPACITY

3

## Upholstery

*BOUCLE (available in 4 colours)*



### COMPOSITION

43% CO, 14% PA, 12% CV,  
3% PES, 28% PAN

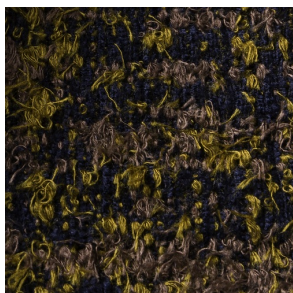
### ABRASION

20000 martindale  
lightfastness 4 - 6  
pilling 4 - 5

### FIRE RESISTANCE

EN 1021-1 (Cigarette)  
EN 1021-2 (Match)

*Bearded Leopard (available in 3 colours)*



**COMPOSITION**

77% CV, 15% PES, 7% CO,  
1% PA

**ABRASION**

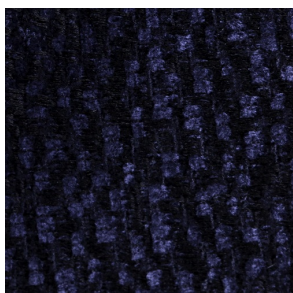
15000 martindale  
lightfastness 4 - 6  
pilling 4

---

*Bison (available in 1 colours)*



*Calligraphy Bird (available in 4 colours)*



**COMPOSITION**

64% CV, 21% PES, 15%  
CO

**ABRASION**

50000 martindale  
lightfastness 4 - 6  
pilling 5

---

*Dodo Pavone (available in 3 colours)*



**COMPOSITION**

12% CO, 88% PES

**ABRASION**

40000 martindale  
lightfastness 5  
pilling 4 - 5

---

*Blushing Sloth Melange Mohair (available in 1 colours)*



**COMPOSITION**

85% WV, 15% WM

**ABRASION**

15000 martindale  
lightfastness 4 - 6  
pilling 2 - 3

---

*Blushing Sloth Woolly Mohair (available in 1 colours)*



**COMPOSITION**

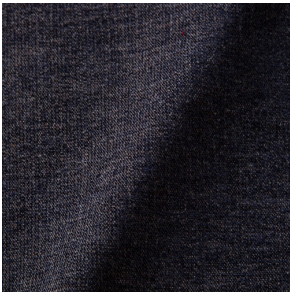
24% PES, 15% PA, 8% CO,  
24% WM, 29% WV

**ABRASION**

40000 martindale  
lightfastness 4 - 6  
pilling 3 - 4

---

*LISCIO (available in 11 colours)*



**COMPOSITION**

35% WO, 35% CV, 21%  
CO, 9% PA

**ABRASION**

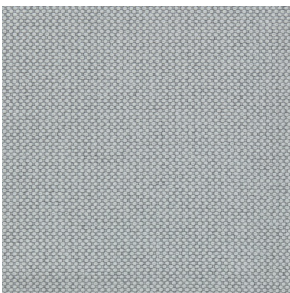
30000 martindale  
lightfastness 4 - 6  
pilling 4

**FIRE RESISTANCE**

TB 117-2013

---

*MERIT (available in 43 colours)*



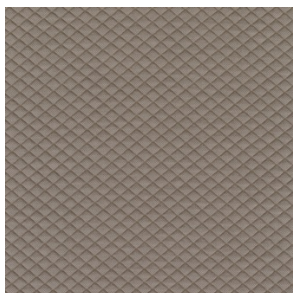
**COMPOSITION**

24% PES, 76%

**ABRASION**

85000 martindale  
lightfastness 7  
pilling 4

*MOSAIC 2 (available in 15 colours)*



**COMPOSITION**

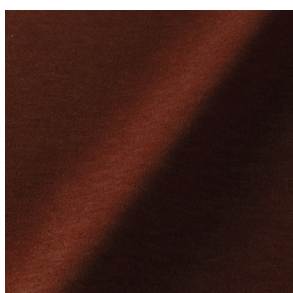
58% PES, 27% WV, 9% PA,  
6% EA

**ABRASION**

100000 martindale  
lightfastness 6 - 7  
pilling 4 - 5

---

*PALETTE (available in 24 colours)*



**COMPOSITION**

42% CO, 29% WO, 29%  
TL

**ABRASION**

45000 martindale  
lightfastness 4 - 5  
pilling 3 - 3

**FIRE RESISTANCE**

BS 5852 - Ignition source  
0 (Cigarette)  
TB 117-2013  
BS 5852 - Ignition source  
5 (Crib 5)