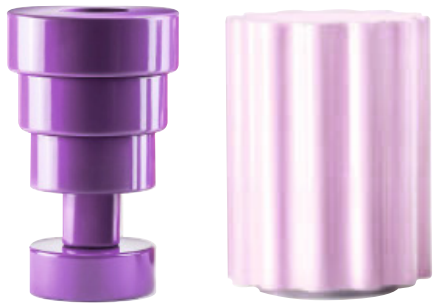


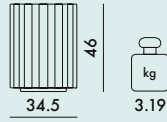
CALICE/COLONNA/PILASTRO 2015

Design Ettore Sottsass



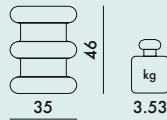
8853

Colonna - Stool



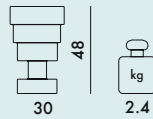
8852

Pilastro - Stool



8851

Calice - Vase



MATERIAL

Painted batch-dyed thermoplastic technopolymer

OPAQUE



12
Green



10
Red



31
Pink



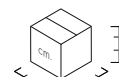
30
Violet



09
Black

reached level
EN 1022:2005 Compliant
EN 16139:2013 + AC2013 Compliant
EN 1728:2012 + AC 2013

4.1 (maximum level) L2
4.2 (maximum level) L2
6.4 (maximum level) L2
6.5 (maximum level) L2
6.15 (maximum level) L2
6.16 (maximum level) L2
6.17 (maximum level) L2
6.18 (maximum level) L2
6.24 (maximum level) L2
6.25 (maximum level) L2



Model	Quantity	Weight (kg)	Volume (cm³)	Dimensions (cm)
8853	1	4.13	0,06	36X46X36
8852	1	4.47	0,06	36X46X36
8851	1	3.22	0,047	31X49X31