

m o o o i

# Hortensia Armchair

ANDRÉS REISINGER & JÚLIA ESQUÉ



The Hortensia Armchair, by Andrés Reisinger & Júlia Esqué, innovatively replicates the beauty of nature. This blooming beauty is inspired by the basic human need for warmth and comfort. Sit down and feel comforted, calm, and soothed. As if you're sitting in a blooming flower, enveloped in smooth and gentle petals. The wondrous Hortensia Armchair will be the softest place in your home. Configurable in a range of different fabrics and leathers of your choice, the Hortensia Armchair blooms in any interior.

---

## *Detailing*



The armchair's curves and signature fabric are inspired by Hortensia flowers: a voluminous plant with blooming petals.

---

## *Colours*



Petal Grey



Petal Ivory

Petal Pink

Petal Sage

Petal Wine

CAT 1

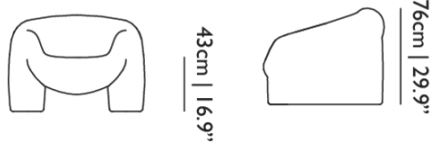
# Hortensia Armchair

## Dimensions

107cm | 42.1"



55cm | 21.7"



## Product

**WIDTH** 107cm | 42.1"

**HEIGHT** 76cm | 29.9"

**DEPTH** 95cm | 37.4"

**WEIGHT NETTO** 48.3kg | 106.48lbs

## Packaging

**WIDTH** 104cm | 40.9"

**HEIGHT** 83cm | 32.7"

**CUBAGE** 1m<sup>3</sup> | 35.36ft<sup>3</sup>

**LENGTH** 116cm | 45.7"

**WEIGHT** 62.5kg | 137.79lbs

## Technical

### MATERIAL

Moulded foam on metal frame

### HEIGHT ARMREST

53cm | 20.9"

### HEIGHT ARMREST 2

67cm | 26.4"

### SEAT DEPTH

54cm | 21.3"

### SEAT HEIGHT

43cm | 16.9"

### SEAT HEIGHT 2

38cm | 15"

### SEAT WIDTH

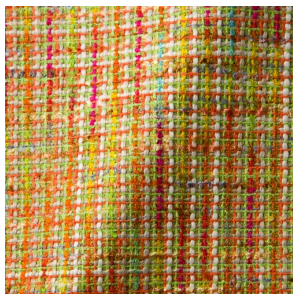
55cm | 21.7"

### SEATING CAPACITY

1

## Upholstery

*BOUCLE (available in 4 colours)*



### COMPOSITION

43% CO, 14% PA, 12% CV,  
3% PES, 28% PAN

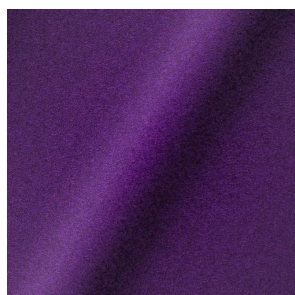
### ABRASION

20000 martindale  
lightfastness 4 - 6  
pilling 4 - 5

### FIRE RESISTANCE

EN 1021-1 (Cigarette)  
EN 1021-2 (Match)

*DIVINA 3 (available in 56 colours)*



**COMPOSITION**

100% WO

**ABRASION**

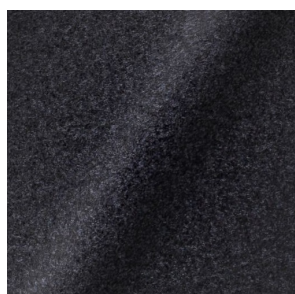
45000 martindale  
lightfastness 7  
pilling 3

**FIRE RESISTANCE**

BS 5852 - Ignition source  
0 (Cigarette)  
BS 5852 - Ignition source  
5 (Crib 5)  
BS 5852 - Ignition source  
1 (Match flame equivalent)  
EN 1021-1 (Cigarette)  
EN 1021-2 (Match)  
TB 117-2013  
EU Ecolabel

---

*DIVINA MD (available in 27 colours)*



**COMPOSITION**

100% WO

**ABRASION**

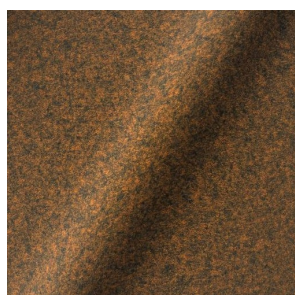
45000 martindale  
lightfastness 6  
pilling 3

**FIRE RESISTANCE**

BS 5852 - Ignition source  
0 (Cigarette)  
BS 5852 - Ignition source  
5 (Crib 5)  
BS 5852 - Ignition source  
1 (Match flame equivalent)  
EN 1021-1 (Cigarette)  
EN 1021-2 (Match)  
EU Ecolabel

---

*DIVINA MELANGE 3 (available in 49 colours)*



**COMPOSITION**

100% WO

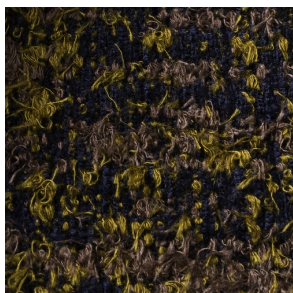
**ABRASION**

45000 martindale  
lightfastness 6 - 7  
pilling 3

**FIRE RESISTANCE**

BS 5852 - Ignition source  
0 (Cigarette)  
BS 5852 - Ignition source  
5 (Crib 5)  
BS 5852 - Ignition source  
1 (Match flame equivalent)  
EN 1021-1 (Cigarette)  
EN 1021-2 (Match)  
TB 117-2013  
EU Ecolabel

*Bearded Leopard (available in 3 colours)*



**COMPOSITION**

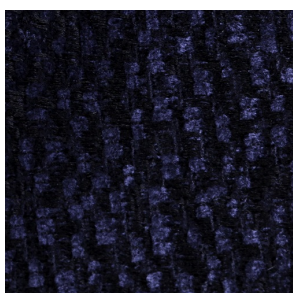
77% CV, 15% PES, 7% CO,  
1% PA

**ABRASION**

15000 martindale  
lightfastness 4 - 6  
pilling 4

---

*Calligraphy Bird (available in 4 colours)*



**COMPOSITION**

64% CV, 21% PES, 15%  
CO

**ABRASION**

50000 martindale  
lightfastness 4 - 6  
pilling 5

---

*Dodo Pavone (available in 3 colours)*



**COMPOSITION**

12% CO, 88% PES

**ABRASION**

40000 martindale  
lightfastness 5  
pilling 4 - 5

---

*Blushing Sloth Melange Mohair (available in 1 colours)*



**COMPOSITION**

85% WV, 15% WM

**ABRASION**

15000 martindale  
lightfastness 4 - 6  
pilling 2 - 3

*Blushing Sloth Woolly Mohair (available in 1 colours)*



**COMPOSITION**

24% PES, 15% PA, 8% CO,  
24% WM, 29% WV

**ABRASION**

40000 martindale  
lightfastness 4 - 6  
pilling 3 - 4

---

*FIORD (available in 39 colours)*



**COMPOSITION**

92% WV, 8% PA

**ABRASION**

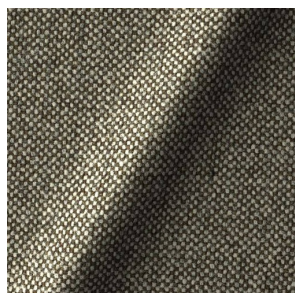
60000 martindale  
lightfastness 6  
pilling 4 - 5

**FIRE RESISTANCE**

EN 1021-1 (Cigarette)  
EN 1021-2 (Match)  
BS 5852 - Ignition source  
0 (Cigarette)  
BS 5852 - Ignition source  
1 (Match flame equivalent)

---

*HALLINGDAL 65 (available in 58 colours)*



**COMPOSITION**

30% CV, 70% WV

**ABRASION**

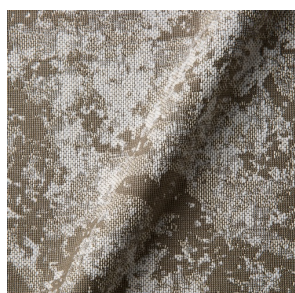
100000 martindale  
lightfastness 7  
pilling 3 - 4

**FIRE RESISTANCE**

BS 5852 - Ignition source  
0 (Cigarette)  
BS 5852 - Ignition source  
5 (Crib 5)  
BS 5852 - Ignition source  
1 (Match flame equivalent)  
EN 1021-1 (Cigarette)  
EN 1021-2 (Match)  
TB 117-2013  
EU Ecolabel

---

*JACQUARD, FRESC (available in 1 colours)*



**COMPOSITION**

52% CV, 38% CO, 10% LI

**ABRASION**

15000 martindale  
lightfastness 3 - 4  
pilling 2 - 3

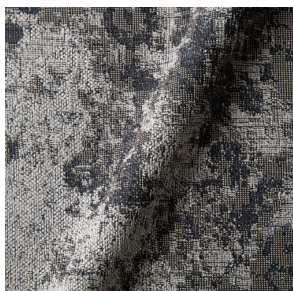
**FIRE RESISTANCE**

BS 5852 - Ignition source  
0 (Cigarette)  
EN 1021-1 (Cigarette)  
EN 1021-2 (Match)



---

*JACQUARD, OLD* (available in 2 colours)



**COMPOSITION**

52% CV, 38% CO, 10% LI

**ABRASION**

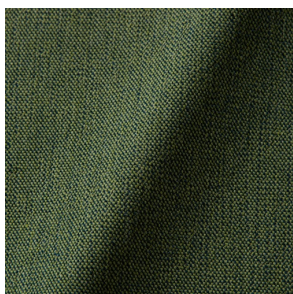
15000 martindale  
lightfastness 3 - 4  
pilling 2 - 3

**FIRE RESISTANCE**

BS 5852 - Ignition source  
0 (Cigarette)  
EN 1021-1 (Cigarette)  
EN 1021-2 (Match)

---

*JUSTO* (available in 10 colours)



**COMPOSITION**

15% CO, 35% PC, 10% PA,  
40% CV

**ABRASION**

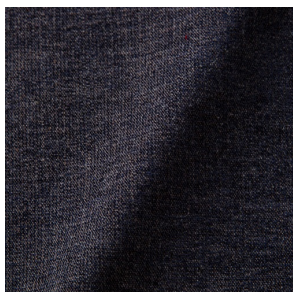
50000 martindale  
lightfastness 5  
pilling 4

**FIRE RESISTANCE**

EN 1021-1 (Cigarette)  
EN 1021-2 (Match)  
TB 117-2013

---

*LISCIO* (available in 11 colours)



**COMPOSITION**

35% WO, 35% CV, 21%  
CO, 9% PA

**ABRASION**

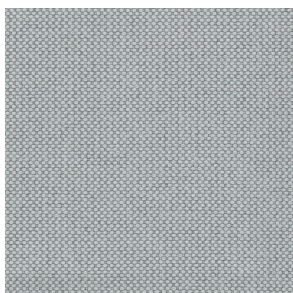
30000 martindale  
lightfastness 4 - 6  
pilling 4

**FIRE RESISTANCE**

TB 117-2013

---

*MERIT* (available in 43 colours)



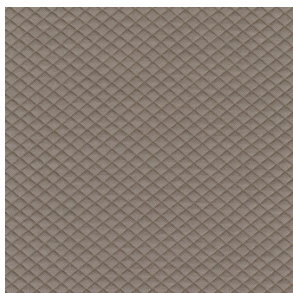
**COMPOSITION**

24% PES, 76%

**ABRASION**

85000 martindale  
lightfastness 7  
pilling 4

## MOSAIC 2 (available in 15 colours)



### COMPOSITION

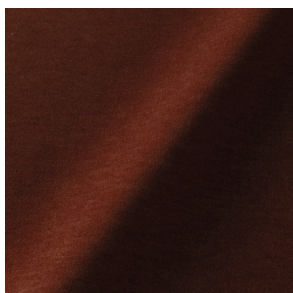
58% PES, 27% WV, 9% PA,  
6% EA

### ABRASION

100000 martindale  
lightfastness 6 - 7  
pilling 4 - 5

---

## PALETTE (available in 24 colours)



### COMPOSITION

42% CO, 29% WO, 29%  
TL

### ABRASION

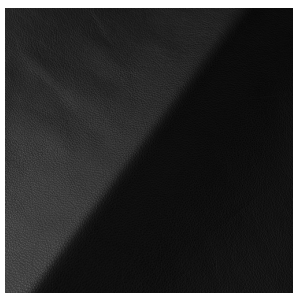
45000 martindale  
lightfastness 4 - 5  
pilling 3 - 3

### FIRE RESISTANCE

BS 5852 - Ignition source  
0 (Cigarette)  
TB 117-2013  
BS 5852 - Ignition source  
5 (Crib 5)

---

## SAVANNE (available in 3 colours)

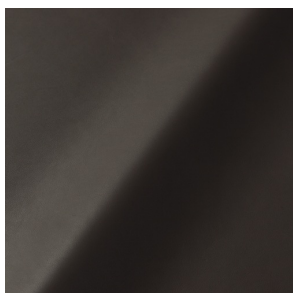


### FIRE RESISTANCE

EN 1021-1 (Cigarette)  
EN 1021-2 (Match)  
TB 117-2013  
OEKO-TEX

---

## SHADE (available in 6 colours)



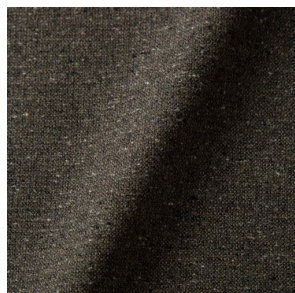
### ABRASION

lightfastness 3 - 4

### FIRE RESISTANCE

EN 1021-1 (Cigarette)  
EN 1021-2 (Match)  
TB 117-2013

*SOLIS (available in 9 colours)*



**COMPOSITION**

60% WO, 30% PES, 2%  
PA, 3% PC

**ABRASION**

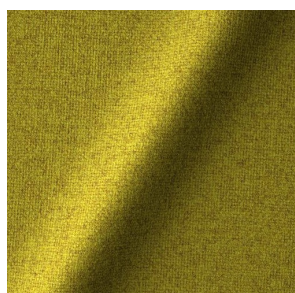
40000 martindale  
lightfastness 5  
pilling 3 - 4

**FIRE RESISTANCE**

EN 1021-1 (Cigarette)  
EN 1021-2 (Match)  
TB 117-2013

---

*TONICA 2 (available in 39 colours)*



**COMPOSITION**

100% WV

**ABRASION**

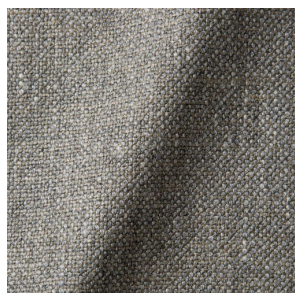
45000 martindale  
lightfastness 6 - 7  
pilling 4 - 5

**FIRE RESISTANCE**

EN 1021-1 (Cigarette)  
EN 1021-2 (Match)

---

*VESPER (available in 8 colours)*



**COMPOSITION**

10% CO, 40% LI, 10% PA,  
10% PES, 30% CV

**ABRASION**

40000 martindale  
lightfastness 5  
pilling 4

**FIRE RESISTANCE**

EN 1021-1 (Cigarette)  
EN 1021-2 (Match)  
TB 117-2013